



# 2017 ANNEXATIONS

A RESOLUTION TO ANNEX  
PROPERTY LOCATED AT 1910 MORGANTON  
ROAD (BLOUNT COUNTY TAX MAP 057,  
PARCEL 040.00) AND TO INCORPORATE THE  
SAME WITHIN THE COPRORATE  
BOUNDARIES OF THE CITY OF MARYVILLE,  
TENNESSEE

Containing 7.083 acres

Effective November 7, 2017



A RESOLUTION TO ANNEX PROPERTY  
LOCATED AT 2415 OLD NILES FERRY  
ROAD (BLOUNT COUNTY TAX MAP 079,  
PARCEL 032.00) AND TO INCORPORATE  
THE SAME WITHIN THE COPRORATE  
BOUNDARIES OF THE CITY OF  
MARYVILLE, TENNESSEE

Containing 5.898 acres

Effective November 7, 2017

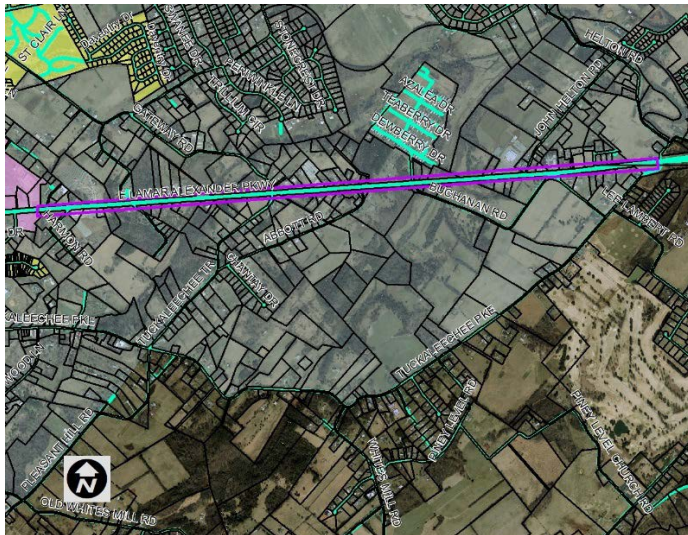




# 2017 ANNEXATIONS

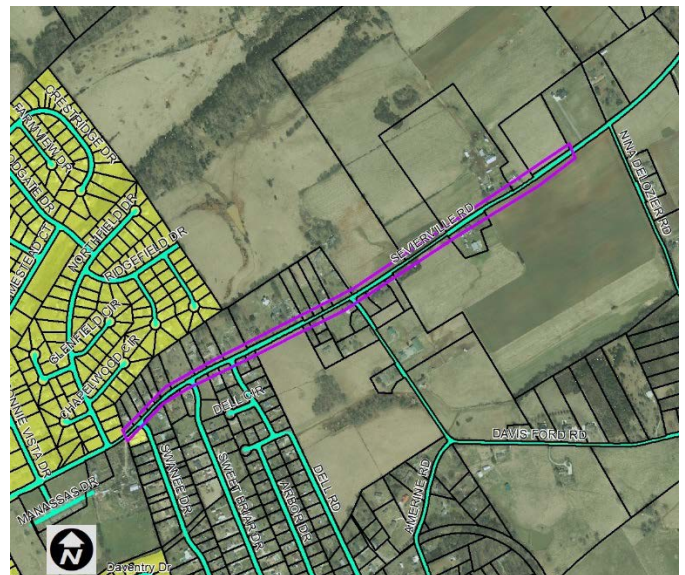
A RESOLUTION TO ANNEX RIGHT OF WAY  
LOCATED AT US HWY 321 EAST FROM  
CITY LIMITS EASTWARD TO THE URBAN  
GROWTH BOUNDARY  
AND TO INCORPORATE THE SAME WITHIN  
THE COPRORATE BOUNDARIES OF THE  
CITY OF MARYVILLE, TENNESSEE

Effective December 5, 2017



A RESOLUTION TO ANNEX THE RIGHT  
OF WAY LOCATED AT  
AT US HWY 411 N FROM CITY LIMITS  
NORTHEASTWARD TO APPROXIMATELY  
THE INTERSECTION WITH NINA  
DELOZIER ROAD AND TO INCORPORATE  
THE SAME WITHIN THE COPRORATE  
BOUNDARIES OF THE CITY OF  
MARYVILLE, TENNESSEE

Effective December 5, 2017



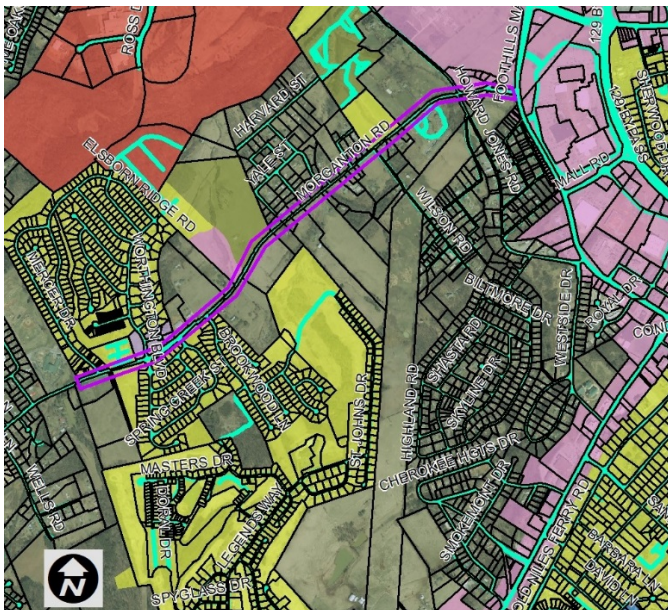




# 2017 ANNEXATIONS

A RESOLUTION TO ANNEX THE RIGHT  
OF WAY LOCATED AT  
MORGANTON ROAD FROM CITY LIMITS  
SOUTHWESTWARD TO THE  
WESTERNMOST CITY LIMIT  
BOUNDARY AND TO INCORPORATE  
THE SAME WITHIN THE COPRORATE  
BOUNDARIES OF THE CITY OF  
MARYVILLE, TENNESSEE

Effective December 5, 2017



A RESOLUTION TO ANNEX THE RIGHT  
OF WAY LOCATED AT  
AT US HWY 411 SOUTH WESTWARD  
FROM CITY LIMITS TO APPROXIMATELY  
1500 FEET PAST THE INTERSECTION  
WITH CLOVER HILL ROAD AND TO  
INCORPORATE THE SAME WITHIN THE  
COPRORATE BOUNDARIES OF THE  
CITY OF MARYVILLE, TENNESSEE

Effective December 5, 2017

